

## Safe & Simple Transfemoral Impella

- Transfemoral Impella placement can be precluded or complicated by severe iliac calcification<sup>1,2</sup>
- IVL is a simple, easy-to-use system that safely modifies iliac artery calcium to achieve luminal gain
- IVL can enable transfemoral Impella insertion in patients with iliac calcification

### Impella Insertion Case Example

Safe introduction of Abiomed Impella CP through severely calcified left iliac artery after modification of calcium using 7.0mm x 60mm Shockwave IVL

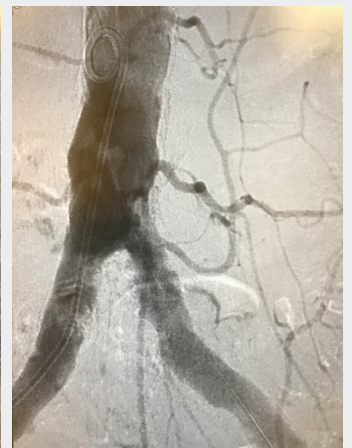
Case Courtesy of Chandan Devireddy, MD Emory University Hospital, Atlanta, GA



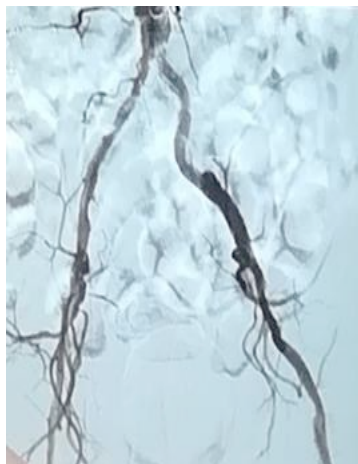
Pre-Intervention



IVL Treatment



Post-IVL



Impella won't advance through introducer



6.5mm Shockwave IVL Catheter, 300 Pulses



Impella advances, no iliac complications

### Impella Insertion Case Example

Successful and safe introduction of Abiomed Impella CP for Protected PCI through calcified iliac artery after modification of calcium using 6.5mm x 60mm Shockwave IVL

Case Courtesy of Carlo Di Mario, MD, Careggi University Hospital, Florence, Italy

# Unique IVL Mechanism of Action



1

The IVL catheter is delivered across a calcified lesion and the integrated balloon is expanded to 4atm to provide good vessel wall apposition, facilitating **efficient energy transfer**



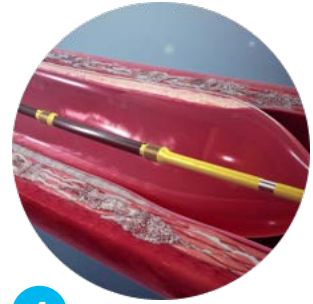
2

An electrical discharge from the emitters vaporizes the fluid within the balloon, creating a rapidly expanding & collapsing bubble that generates **sonic pressure waves**



3

The waves create a **localized field effect** that travels through soft vascular tissue, selectively **cracking intimal and medial calcium** within the vessel wall



4

After calcium modification, the integrated balloon may subsequently be used to **dilate the lesion at low pressure** in order to **maximize luminal gain**

## IVL Catheter Specifications

Larger diameters IVL catheters are capable of modifying calcium in iliac arteries to facilitate delivery of large bore access devices

CATALOG #	DIAMETER (mm)	LENGTH (mm)	GUIDEWIRE COMPATIBILITY (IN)	SHEATH COMPATIBILITY	WORKING LENGTH	PULSES (MAX)
M5IVL3560	3.5	60	0.014	6F	110	300
M5IVL4060	4.0	60	0.014	6F	110	300
M5IVL4560	4.5	60	0.014	6F	110	300
M5IVL5060	5.0	60	0.014	6F	110	300
M5IVL5560	5.5	60	0.014	6F	110	300
M5IVL6060	6.0	60	0.014	6F	110	300
M5IVL6560	6.5	60	0.014	7F	110	300
M5IVL7060	7.0	60	0.014	7F	110	300

Discover how you can treat calcium more effectively with the Peripheral Intravascular Lithotripsy (IVL) System.

Visit [Shockwavemedical.com](http://Shockwavemedical.com) for more information.